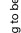



Demolition Plan Key

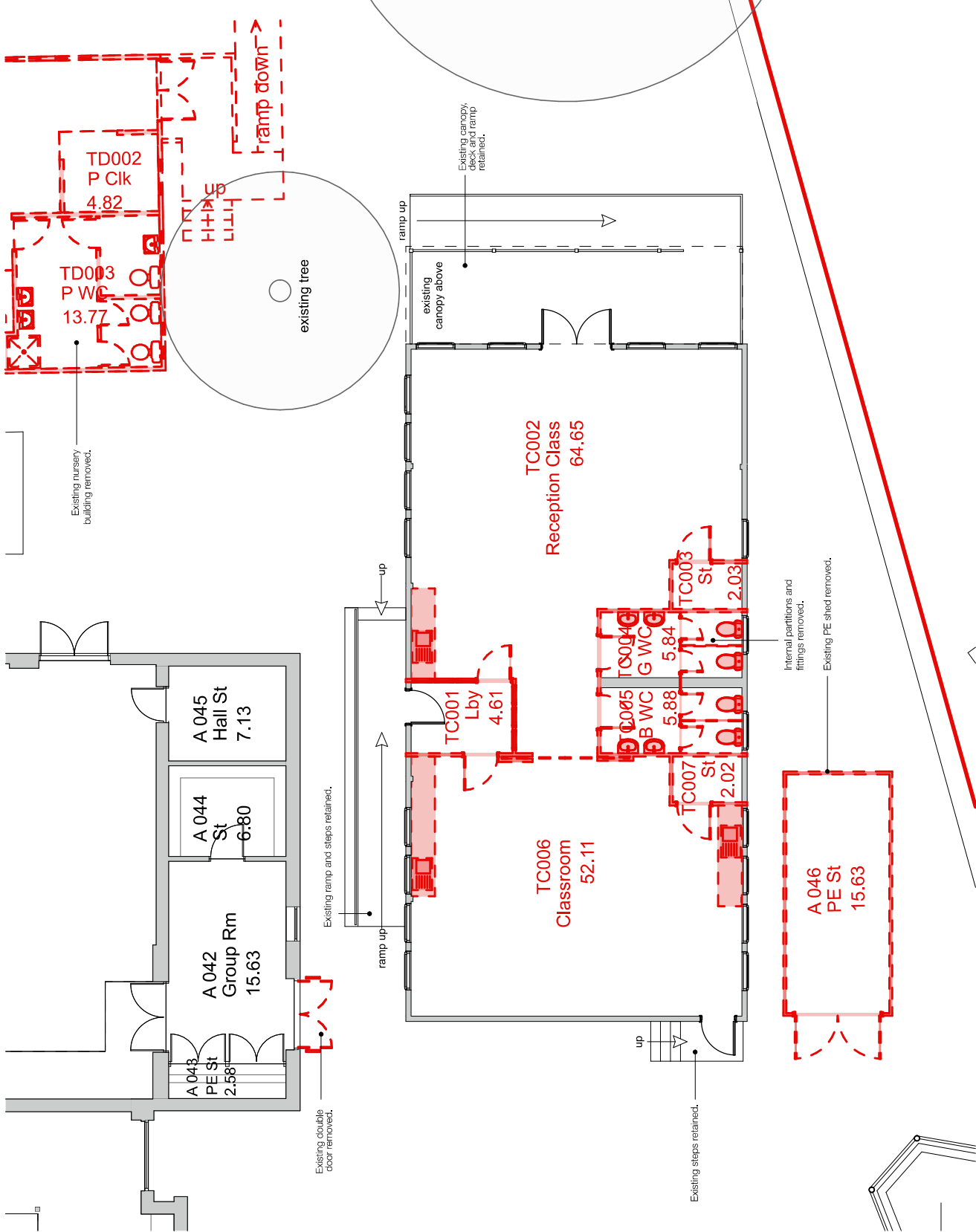
-  Existing to be Retained
-  Existing to be Demolished



Internal photos of existing Elliott building



1:100 @ A3
0 2 5m



Bishop Henderson School - SEND
For
Futures for Somerset

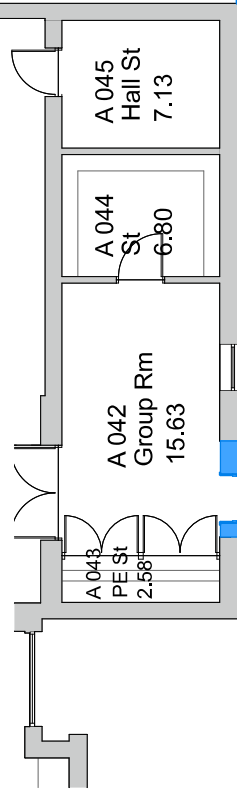
Author
RL
RL

Rev	Date	Description
1	13/07/2025	Initial issue for comment.
A	13/07/2025	WC partitions to be demolished.

Demolition Plan

SEND Classroom Area Requirements

No. of pupils	6 - 8	Taken from Bishop Henderson Primary SEN Feasibility Standards Capture.
Designation	ASD	Zone U Upper - taken from Figure 16 BB104 Pg 38. Room type primary classroom (severe autism).
Required Area	62sqm	28 + (4.2 x 8) = 61.6 sqm from Figure 15 BB104 Pg 34. <i>Can accommodate 6 pupils per key stage. Sensory area is additional.</i>
Proposed Area	53sqm	



New single door to join with mill to external wall opening.

Gate to provide additional fire escape route.

New 1.8m bowtop fence to create secure external area.

Replacement PE Shed

New PE Shed to replace existing. Existing steps retained.

Existing ramp, and steps retained.

Existing canopy, deck and ramp retained.

Existing nursery building removed.

Existing canopy, deck and ramp retained.

Existing canopy, deck and ramp retained.

Existing canopy, deck and ramp retained.

Existing canopy, deck and ramp retained.

Existing canopy, deck and ramp retained.

Existing canopy, deck and ramp retained.

Existing canopy, deck and ramp retained.

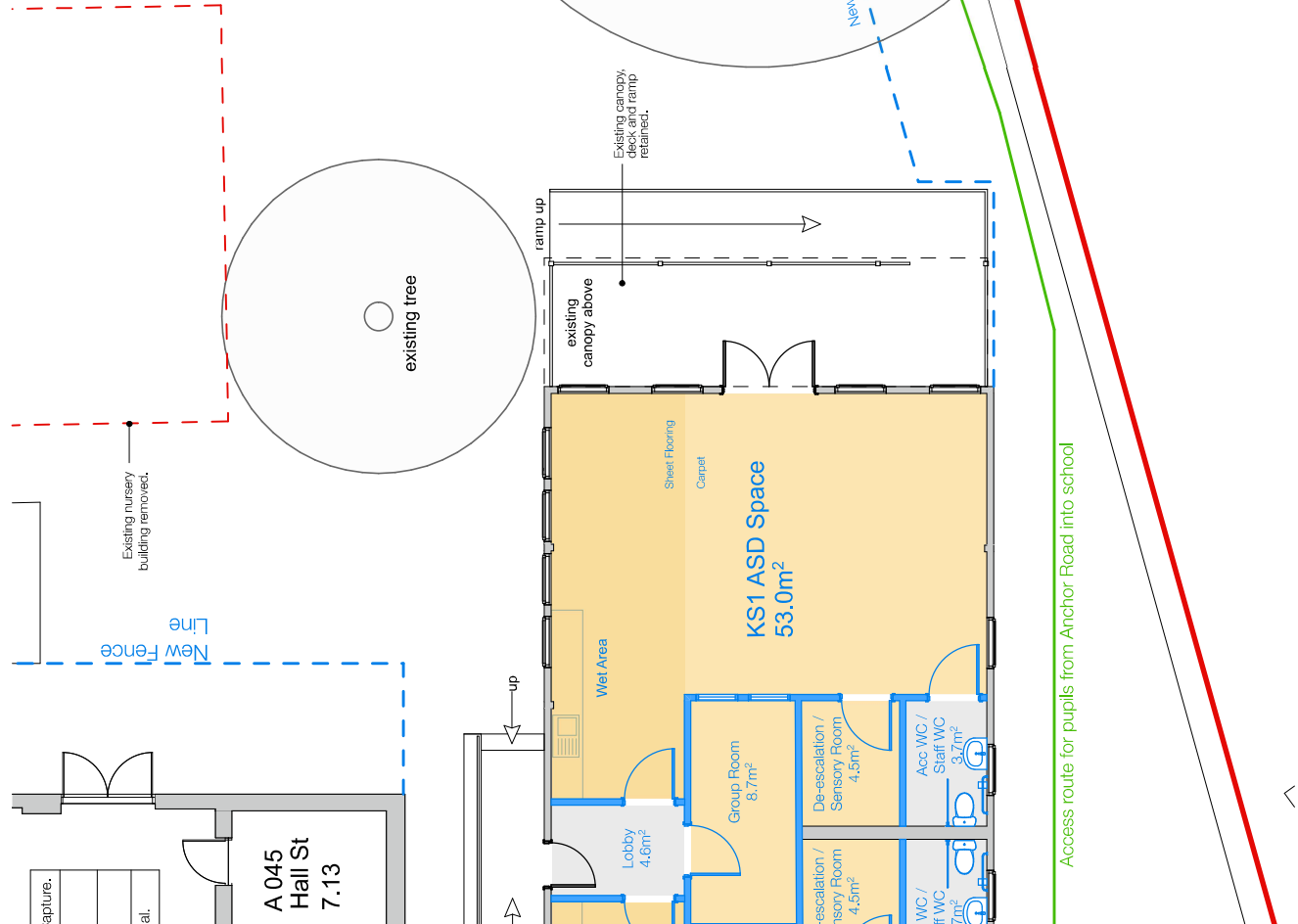
Existing canopy, deck and ramp retained.

Existing canopy, deck and ramp retained.

Existing canopy, deck and ramp retained.

Existing canopy, deck and ramp retained.

Existing canopy, deck and ramp retained.



The Red Shed,
Moorfield Browning Way
Faversham, Essex, S10 8DD
01597 498251
mailto:enquiries@grainge.com

Rev	Date	Description
1	13/07/2025	Final issue for comment
2	13/07/2025	Internal layout updated

Author
RL
RL

Bishop Henderson School - SEND
For:
Futures for Somerset

Proposed Plan



Schedules of Accommodation

Basic Teaching Areas	Existing to be Retained
Non-Net Areas	New Construction

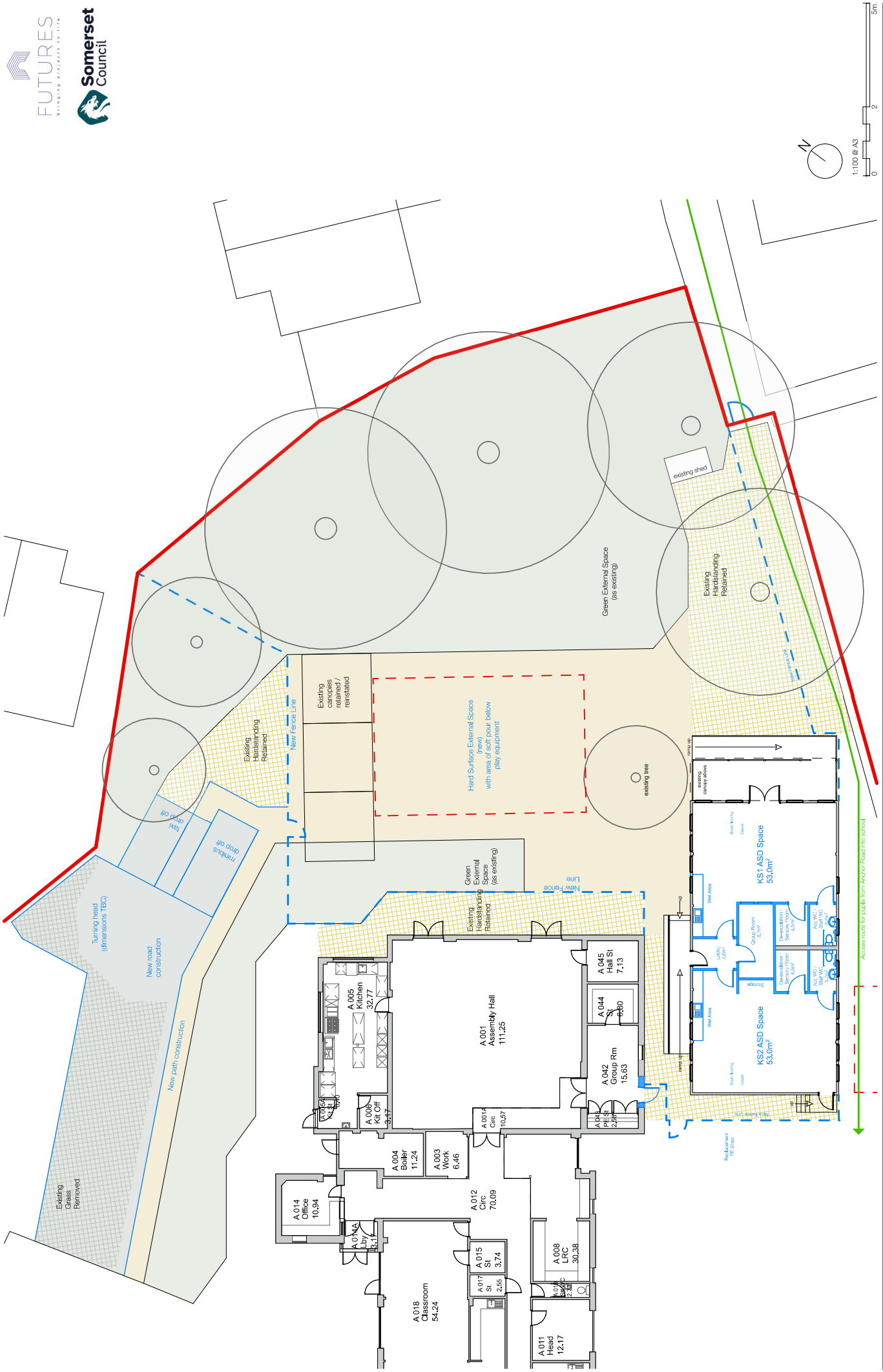
Proposed Plan Key

Existing to be Retained
New Construction

STATUS
DRAFT FOR COMMENT

SCALE
1:100 @A3

DRAWING NO.
2098 - SK-003 RevA



Proposed Site Plan

Bishop Henderson School - SEND
For
Futures for Somerset

STATUS: **DRAFT FOR COMMENT**
 DRAWING NO.: **2098 - SK-004 Rev /**
 SCALE: **1:200 @A3**

Author
ft

Rev / Date Description
 / 15/07/2025 Initial issue for comment.